



New frame for Magic Corner



Product Benefits

- ✓ Assembly time is reduced by 50%
- ✓ Same drilling positions
- ✓ No tool is required for the assembly of the frame and the front panel
- ✓ Enhanced door stability
- ✓ Optimization of the extension motion
- ✓ No tool is required for the adjustment of the door
- ✓ Pre-assembled system
- ✓ Optional SoftStopp dampening device for soft closing



Product codes

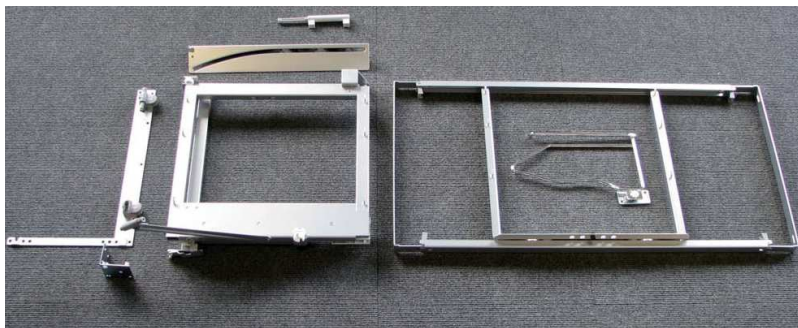
New frame for Magic Corner

Magic Corner is now available with a new sliding frame system and an enhanced closing mechanism.

No tool is required for the adjustment and the mounting of the frame. The door is mounted with an easy clip-on system guaranteeing better frontal stability thanks to a new clip-on diagonal bar.

The SoftStopp dampening device (#016211100) is available as an option for a soft closing and smooth motion. The existing sets of baskets are perfectly adapted to the new frame.

The system is already pre-assembled allowing for an easy installation in less time. The front part does not close if the frame is not locked properly. No tool is required for an adjustment on the rear panel.



Codes

Description

Frames

16104100	Left frame, grey
16103100	Right frame, grey

Choice of Arena baskets

6107140100	Set of 4 Arena baskets grey
6107140150	Set of 4 Arena baskets maple
6107140	Set of 4 baskets, wire chrome

Option

016211100	SoftStopp shock absorbing mechanism
-----------	-------------------------------------

N.B.

The frame # 16104100 will be replacing the code 6104100 (left frame, grey), while the frame #16103100 will be replacing the code # 6103100 (right frame, grey).

Arena baskets are now available in grey and maple melamine surface.

1

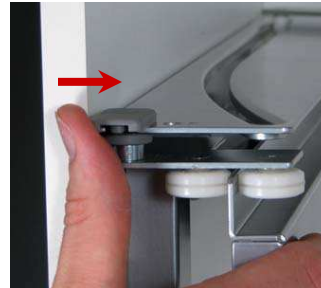
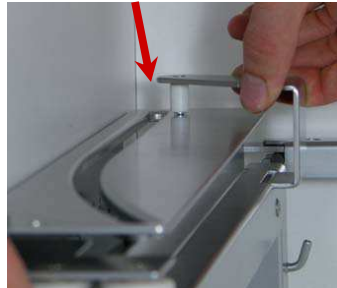
Width adjustment of the rear frame (without tool)



1. Lift up the lever
2. Adjust the frame width to the dimensions of the cabinet
3. Lock the lever

2

Sliding frame assembly (without tool)



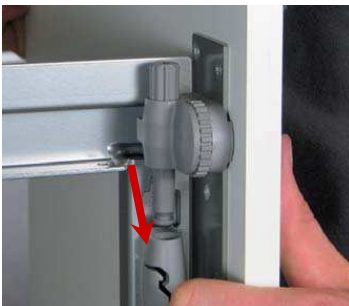
1. Release the locking device
2. Connect the frame

4. Fix the locking device
The sliding frame is fixed by turning the locking device, otherwise, the frame cannot be closed

3

Mounting of the door (without tool)

Clip the door on the top side



And on the bottom side...



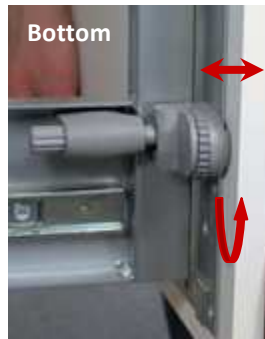
4

Door adjustment (without tool)

1. Vertical adjustment (up-down) thanks to rotating adjuster (+/-3mm (1/8"))



2. Lateral adjustment: right-left (+/- 3mm (1/8"))



5

Frame adjustment (without tool)

4. Opening angle adjustment with rotating adjuster.

